



Reliable heating
since 1923

CTC EcoPart



Heat pump for bedrock, ground- and lake heating

**A heat pump designed for private
houses and smaller properties**

- Available in five sizes:
5 / 7.5 / 8.5 / 10.5 and 12
- Equipped with a built-in control
system for solid condensation /
accumulator charging
- The solution for installations in
an area with low ceiling height
- For better efficiency, economy and
longer life time is the CTC EcoPart
equipped with a patented intercooler
- Suitable for single- and double pipe
system, convectors and floor heating
- Silent-running
- Built-in soft starter

The CTC EcoPart is a heat pump designed to provide heating to private houses, smaller buildings and industrial facilities.

The CTC EcoPart is flexible and designed for connection to an existing- or new heating boiler. The bedrock, ground or a lake is used as source of heat.

The CTC EcoPart has a built-in control system to prevent freezing and accumulator charging by control of the return flow temperature.

When connecting to the electric boiler CTC EcoEI its integrated control system is used in order to achieve optimal function and comfort.

In installations where the CTC EcoPart is connected to an existing boiler for oil/gas/el/wood or pellets, a CTC EcoLogic is required to control the overall system.

For installations with limited ceiling height, the EcoPart is suitable to connect to the lower model of CTC EcoEI (height 1550 mm). The functionality of the combined products will then be as the CTC EcoHeat.

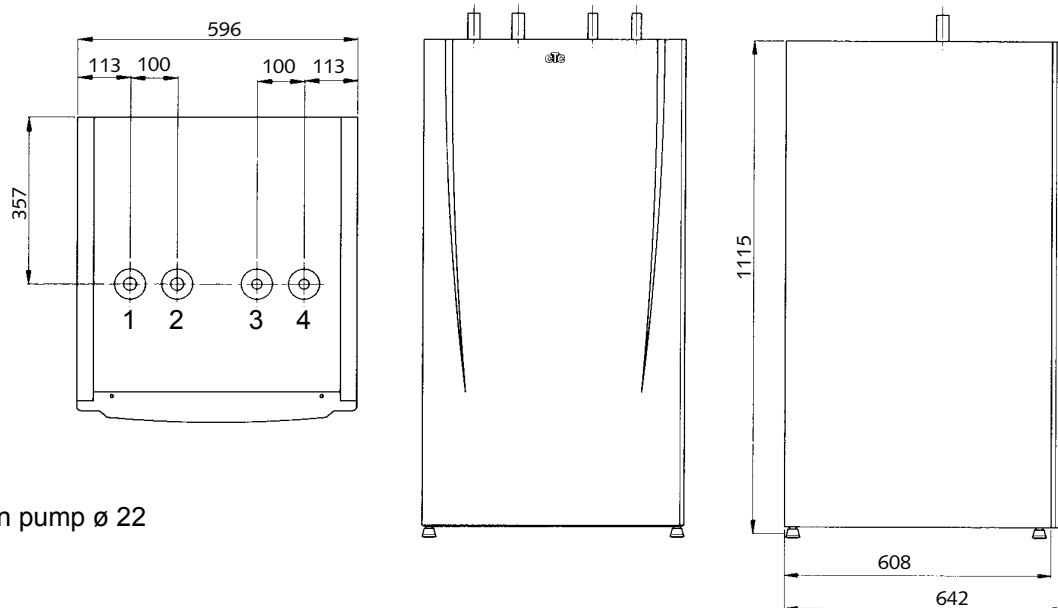
The CTC EcoPart is equipped with a unique patented evaporator solution, the intercooler. The intercooler ensures that the efficiency (COP) of the CTC EcoPart stays in the upper range.

The high efficiency not only reduces the annual operating costs, but also reduces wear of the compressor, prolonging the life span of the heat pump.

The CTC EcoPart is suitable for many different types of heating systems: single- and double pipe system, convectors and floor heating.

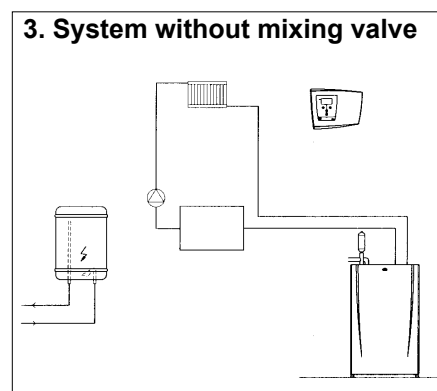
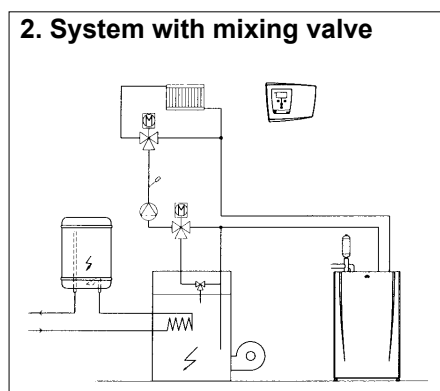
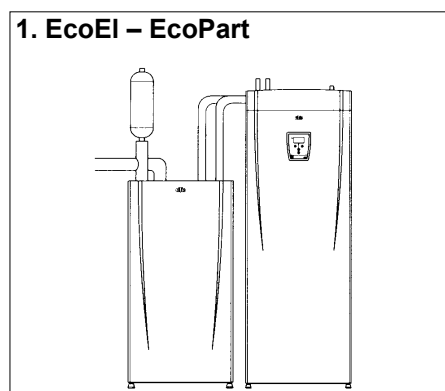
CTC EcoPart		5	7,5	8,5	10,5	12
Electrical data		400V 3N~/230V 1N~				
Nominal output elect	kW	1,9	2,4	2,9	3,4	4,1
Power consumption compressor + pumps at 35/50°C	kW	1,3/1,7	1,8/2,3	2,0/2,5	2,5/3,4	2,9/3,9
Emitted output compressor at 35/50 °C	kW	5,9/5,1	7,6/7,1	8,7/7,7	10,4/10,3	12,4/11,6
Max op pressure compressor	A	5	7	9	11	11,6
Min group fuse	A	10				
Water volume evaporator (TS) l		3		4,7		5,6
Brine system min/max pressure (PS)	bar	0,2/3				
Brine pump adjustment speed		3				
Brine system min/max temp (TS)	°C	-15/30				
Refrigerant (R407C)	kg	1,55		2,1		2,5
Cut-off pressure, pressure governer HP / LP	bar	27/1,5				

Measures



1. From ground \varnothing 28
2. To ground \varnothing 28
3. To boiler \varnothing 22
4. From boiler/circulation pump \varnothing 22

Hydraulic examples



The CTC EcoPart can be connected to the electrical boiler CTC EcoEI, or to your existing boiler together with the control system for heat pumps, CTC EcoLogic.

The product complies to the EN directive:

LVD: 73/23/EEC och 93/68 EEC

EMC: 89/336/EEC

and is tested according to EN255

Subject to alterations in design.



P.O. Box 309, S-341 26 Ljungby, Sweden
 Tel + 46 372 880 00 Fax +46 372 824 94
www.ctc-heating.com